

This article provides a detailed guide for IT administrators on how to perform a mass deployment of the ClickShare Desktop App (PKG) file using Microsoft Intune on macOS systems. Keep in mind that deployment via Microsoft Intune can vary depending on your company's security regulations and policies, so be sure to always check these before proceeding with the deployment.

Info! If you are looking for instructions on how to deploy the ClickShare Desktop App (DMG) file using Intune, please see [KB 11889](#).

Steps for mass deployment of the ClickShare Desktop App (PKG) file using Intune

1. [Download ClickShare Desktop App PKG file](#)
2. [Preparations](#)
3. [Add PKG file to Microsoft Intune](#)
4. [Install company portal on macOS](#)

■ Step 1: Download ClickShare Desktop App (PKG) file

Click [here](#) to download the ClickShare Desktop App (PKG) file on your macOS device.

■ Step 2: Preparations

1. Create an MDM push certificate
 - a. Sign in to the [Microsoft Intune admin center](#).
 - b. Go to the **Devices** > **MacOS** > **macOS enrollment**.
 - c. Click **Apple MDM Push Certificate**.
 - d. Follow the steps outlined in the image below to generate an MDM certificate.

Configure MDM Push Certificate



Delete

Essentials

| | |
|---------------|-----------------------|
| Status | Days until expiration |
| Not set up | Not available |
| Last updated | Expiration |
| Not available | Not available |
| Apple ID | Subject ID |
| Not set up | Not set up |
| Serial number | |
| Not set up | |

You need an Apple MDM push certificate to manage Apple devices with Intune.

Steps:

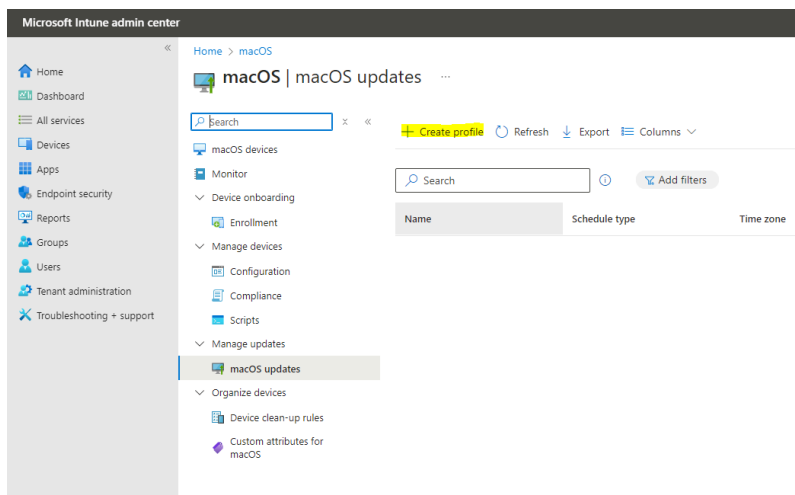
- I grant Microsoft permission to send both user and device information to Apple. [More information on Microsoft permission.](#)
☒ I agree. *
- Download the Intune certificate signing request required to create an Apple MDM push certificate.
[Download your CSR](#)
- Create an Apple MDM push certificate. [More information on Apple MDM push certificate.](#)
[Create your MDM push Certificate](#)
- Enter the Apple ID used to create your Apple MDM push certificate.
Apple ID *
- Browse to your Apple MDM push certificate to upload

2. Create a group for deployment. For how-to instructions, click [here](#).

3. Create a profile:

a. Go to **Devices > macOS > Update Policy for macOS**.

b. Click **Create profile**.



c. Name the profile.

Home > Devices | macOS > macOS | Update policies for macOS >

Create Profile ...

macOS

1 Basics 2 Update policy settings 3 Assignments 4 Review + create

Name * macOS update ✓

Description

- d. Select an option **Download and install** or **Install immediately** from the **All other Updates (OS, built-in apps)** drop-down menu.

Home > Devices | macOS > macOS | Update policies for macOS >

Create Profile ...

macOS

✓ Basics 2 Update policy settings 3 Assignments 4 Review + create

Create a profile to force assigned devices to automatically install the latest macOS updates. These settings determine how and when software updates deploy. This profile doesn't prevent users from updating the OS manually. Updates will only apply to supervised devices.
[Learn More](#)

Update policy behavior settings

Select how downloads, installations, and/or notifications should occur for each type of update.

Critical updates Not configured ✓

Firmware updates Not configured ✓

Configuration file updates Download and install ✓

All other updates (OS, built-in apps) Download and install ✓

Update policy schedule settings

By default, when an update policy is assigned to a device, Intune deploys the latest updates at device check-in. You can instead create a weekly schedule with customized start and end times. If you choose to update outside of the scheduled time, Intune won't deploy updates until the scheduled time ends.

Schedule type ⓘ Update at next check-in ✓

- e. Add the group(s) to this profile.

Home > Devices | macOS > macOS | Update policies for macOS >

Create Profile ...

macOS

✓ Basics ✓ Update policy settings 3 Assignments 4 Review + create

Included groups

+ Add groups + Add all users + Add all devices

Groups

No groups selected

Group Members ⓘ

Excluded groups

ⓘ When excluding groups, you cannot mix user and device groups across include and exclude.

+ Add groups

Groups

No groups selected

Group Members ⓘ

Select groups to include

Azure AD Groups

Try changing or adding filters if you don't see what you're looking for.

Search

4 results found

| All | Groups | Name | Type | Details |
|-------------------------------------|--------|-------------|-------|---------|
| <input type="checkbox"/> | | autopilot | Group | |
| <input checked="" type="checkbox"/> | | MacOS group | Group | |
| <input type="checkbox"/> | | onlyone | Group | |
| <input type="checkbox"/> | | user | Group | |

For additional instructions on creating a profile. click [here](#).

Step 3: Add PKG file to Microsoft Intune

1. Go to the Apps section on the Microsoft Intune Admin center.
2. In the *By Platform* section, select **macOS** and click **+Add**.
3. Click **Select app package file** and browse to the location that contains the PKG file.
4. Select the file, click **Open** and then click **OK**.

5. Configure **App Information** for PKG file (fields marked with an asterisk * are mandatory):

- **Name:** The app name is automatically extracted from the PKG file, but you can adjust it if necessary.
Note: Avoid using spaces in the name, and ensure the version number does not exceed three digits. You can use underscores, for example, ClickShare_4.40.0.
- **Description:** The description is automatically extracted from the PKG file, but you can edit it if needed.
Click **Edit Description** to make changes.
- **Publisher:** Enter the Publisher name "Barco".
- **Category:** Select an appropriate category. (e.g., Collaboration & Social).
- [Optional] **Information URL:** Enter a valid url to an information page about the app.
- [Optional] **Privacy URL:** Enter a valid url to an information about the app's privacy settings.
- [Optional] **Developer:** Enter the name of the company or individual that developed the app.
- [Optional] **Owner:** Enter the name of the primary contact person for this app in your company.
- [Optional] **Notes:** You can add additional notes here.
- [Optional] **Logo:** Click **Select image** to open the file location that contains a file that is associated with the app.

6. Click **Next** to continue.

7. Configure **Program** for PKG file. Enter the Pre-install and Post-install scripts:

- a. Pre-install script (mandatory): Required for accepting the EULA (End User License Agreement)

```
#!/bin/bash

defaults write /Library/Preferences/com.barco.clickshare.plist ACCEPT_EULA -string "YES"
```

- b. Post-install script: Use it to pass the ClickShare parameters available for the PKG file. You can include multiple parameters in a single script. For a complete list of available ClickShare parameters, refer to the [KB 13078](#).

Here's an example of a script for passing multiple parameters: to enable "Product Usage Analytics" and to disable "Auto Update".

```
#!/bin/bash

/Applications/ClickShare.app/Contents/MacOS/ClickShare -
PRODUCT_USAGE_ANALYTICS=YES -AUTO_UPDATE=NO
```

8. Configure the OS **Requirements**: macOS Big Sur 11.0 (**minimum operating system**) or higher.

9. Configure the **Detections rules**:

- a. **Ignore app version:** Select **Yes** to allow the app to automatically update when a new version is available (recommended default). Select **No** to manage the version through Intune configuration without automatic updates. When passing the AUTO_UPDATE parameter, ensure it is set to "NO".
- b. **App bundle ID (CFBundleIdentifier):** Automatically filled this value from the PKG information (e.g., com.barco.clickshare.updater).
- c. **App version (CFBundleShortVersionString):** The app version, e.g. 4.38.0.8.

10. Configure the **Assignments**:

- **Required:** Add the required targets.
- **Available for enrolled devices:** Add the targets for which you want to make the app available in the Company Portal.

- **Uninstall:** Add the targets for which you want to uninstall the app.

11. Click **Next** to continue

12. Review the settings and click **Create**.

■ Step 4: Install the company portal on a macOS device to enroll the app

Go to [Enroll your Mac with Intune Company Portal](#) and follow the instructions to download the **Company Portal app** and **Install the profile** on your macOS device.

Troubleshooting tips for the ClickShare Desktop App (PKG) file

1. If the ClickShare Desktop (PKG) App fails to install or does not start after installation on your macOS device, we recommend collecting logs from the following locations and contacting Barco Support for assistance (how-to, see [KB 6024](#)).

Logs locations:

- */Library/Logs/Barco/ClickShare App/updater.log*
- *\$Home/Library/Application Support/Barco/ClickShare App/updater.log*

Take a look at this detailed guide on [gathering Intune logs from a macOS device](#).

2. If you are unable to use macOS features like screen recording or others after installing the ClickShare Desktop App (PKG) file, it's probably because the ClickShare Desktop App doesn't have the required permissions. To fix this, you might need to create and deploy a PPC profile in Intune for your macOS device to enable these features (how-to, see [KB 13348](#)).

Related articles

- [Deploying the ClickShare App with Microsoft Intune](#)
- [What are the supported parameters available for the ClickShare Desktop App \(PKG\) file](#)
- [Mass deployment of the ClickShare Desktop App \(version 4.28 and higher\) across your company](#)
- [Mass deployment of the ClickShare Desktop App \(version 4.27.2 and lower\) across your company](#)